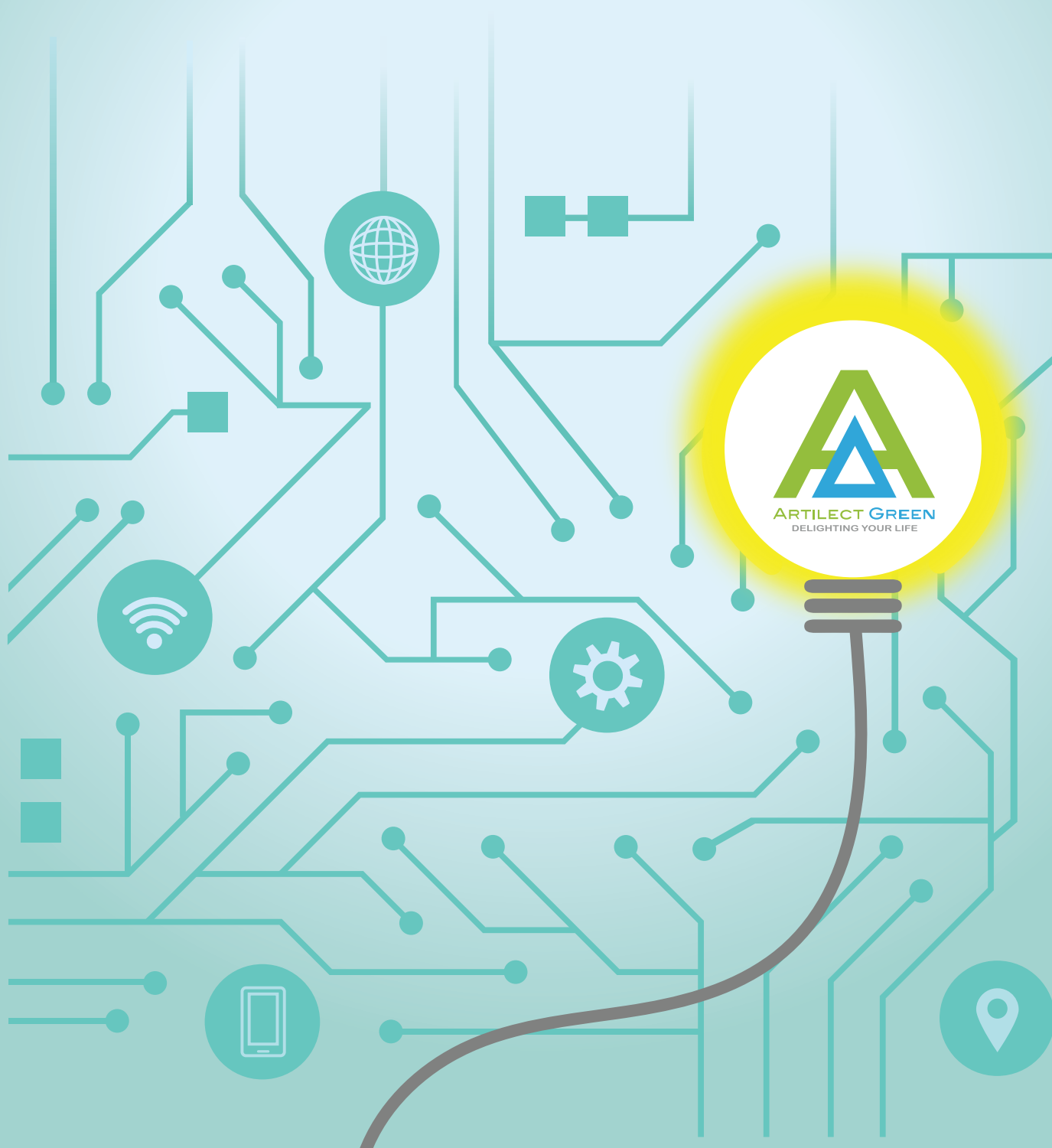




Smart Link System

Artilect Green





Product Description

01

Wall Switch

All wall switches are equipped with Artilect Smart Engine (Application Controller), and capable to work alone or advanced DALI gateways. Our smart engines are capable of dimming, color tuning, two-way and sub-group dimming.

The options also come with DALI or DC power source, and color indicators; provides higher usability.

02

CC & CV Advanced Driver

Artilect advanced drivers come with full protection and metering features such as OCP, SCP, thermal, load-change, input and output's voltage/current/watt/frequency/on-time/oncount, and error counts. Output and protection points are programmable. Customization is available.

Artilect Smart Light EMS will bring more advanced features with DALI Data in our advanced drivers.

03

Sensor & Inputs

Offering series of motion and light sensors, and all integrated with Artilect Smart Engine. Smart Engine will detect the motion and luminance to adjust a room's luminaires.

Different sensors like ultra-sonic, IR-distance, temperature, humidity, and converters are available upon request.

04

Relay & Others

Power Hybrid Relay with anti-inrush, Quad-Relay, dry switch controller, IR-remote converter, digital-LED controller and 0-10V analog Converters are offered to reduce the total cost DALI integration, and make integration easier on whole building and factory scale. Some advanced features like igniter of 0-10V converter helps to dim to min level from off; and the anti-inrush design helps to increase power GRID and luminaires quality and life-time.

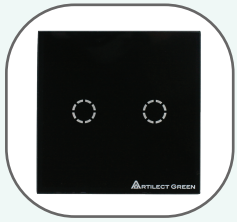
05

Gateway & Bus Power

Artilect's gateways offers advanced DALI tools and smart apps, which make your installation and configuration easier. The configuration tool also simplify the configuration of Artilect smart engine of wall switches and sensors. Artilect gateways also offer Smart Script Engine allowing users to do more complex tasks.

Artilect DALI bus repeater is also high-end bus power supply with 30 us delay time; making DALI bus extension as transparency.

Equipment and Materials Comparison Chart



01. Wall Switch

Wall Switch	Input		Color	Buttons	Indicator Color	DALI			Artellect Smart Engine					
	Voltage / Source	Current				301	302	304	Dim	Scene	2-Way	CT Dim	Inter Control	103 Control
EU Touch Wall Switch	DALI Bus	4~20mA	Black / White	1~4	RGB	✓			✓	✓	✓	✓	✓	✓
US Touch Wall Switch	DALI Bus	4~25mA	Black / White	1~3,6	RGB	✓			✓	✓	✓	✓	✓	✓
Wall Switch Module - NFB	DALI Bus	4mA	Black	4	No	✓			✓	✓	✓	✓	✓	✓
Wall Switch Module - MonoFB		3~20mA			Mono									
EU Touch Wall Switch with Light Sensor	DALI Bus	4~20mA	White	3, 4	RGB	✓		✓	✓	✓	✓	✓	✓	✓
SmartLink IR Remote Receiver	DALI Bus	4mA	White	12	No	✓			✓	✓	✓	✓		✓
EU 6-Button Wall Switch (Coming)	DALI Bus	3~40mA	White	6	4xRGB	✓			✓	✓	✓	✓	✓	✓

Note:

DALI-2 is on selected models only. Others are upon request.

2-Way function: two or more buttons can control the same light and exchange their status.

Inter Control: allows each button to interact with each other to form a group function.

103 Control: allows each button to enable or disable other input devices/instances.

Dim and Scene functions: allows to dim or recall DALI gear's dimming level or scenes. Each has a max. of 8-levels.

CT Dim: allows to change DALI luminaires' colour temperature.



02. Advanced LED Driver

Advanced LED Driver	Input	Mode	Out-V	Out-I	CT	RGB	OCP	OLP	SCP	Thermal	252	253	ErrRec.	Other
Smart AC CC 20~50W LED Driver	AC 100~240V	Mixed CC	3~45V	0.1~1A			✓	✓	✓	✓	✓	✓	✓	251
Smart AC 1xCC CT 20~40W LED Driver	AC 100~240V	Mixed CC	3~45V	0.1~1A	✓		✓	✓	✓	✓	✓	✓	✓	251
Smart AC Dual-CC CT 20~60W LED Driver	AC 100~240V	Mixed CC	3~45V	0.1~1Ax2	✓		✓	✓	✓	✓	✓	✓	✓	251
Smart AC CC 100W+ LED Driver (coming)	AC 100~240V	Mixed CC	3~45V	0.5~2.5A			✓	✓	✓	✓	✓	✓	✓	251
Smart AC CV 60W Driver (upon request)	AC 100~240V	CV PWM	24V	2.5A			✓	✓		✓	✓	✓	✓	251
Smart DC CV 6A Driver	DC 12~24V	CV PWM	=input	6A			✓	✓		✓	✓	✓	✓	251
Smart DC CC 1A LED Driver	DC 12~48V	Mixed CC	3~input	0.1~1A			✓	✓	✓	✓	✓	✓	✓	251
Smart DC 3-Channel CV Driver	DC 12~24V	CV PWM	=input	3Ax3	✓	✓	✓	✓		✓	✓	✓	✓	251
Smart DC 6-Channel CV Driver	DC 12~24V	CV PWM	=input	3Ax6	✓	✓	✓	✓		✓	✓	✓	✓	251
Smart DC Dual-CC LED Driver	DC 12~48V	Mixed CC	3~input	0.1~1Ax2	✓		✓	✓	✓	✓	✓	✓	✓	251

Note:

DALI-2 is on selected models only. Others are upon request.

DALI 251 is the luminaire information type. DALI 252 is the energy report type. The accuracy is between 1~2%.

DALI 253 is the diagnostic, usage and error report type.

All output current control and protection points are programmable.



03. Sensor & Inputs

Sensor	Input		Sensor	Indicator	DALI			Artilect Smart Engine			
	Voltage/Source	Current			301	303	304	Smart Light	Color Dim	Inter Control	103 Control
Motion+Light Sensor - 8M	DALI Bus	8mA	PIR+Light			✓	✓	✓		✓	✓
Motion+Light Sensor - Corridor	DALI Bus	8mA	PIR+Light			✓	✓	✓		✓	✓
Motion+Light Sensor - Highbay	DALI Bus	8mA	PIR+Light			✓	✓	✓		✓	✓
Mini Light Sensor	DALI Bus	4mA	Light				✓	✓		✓	✓
Large-Pad Sensor	DALI Bus	4mA	External		✓					✓	✓

Note:

DALI-2 is on selected models only. Others are upon request.

Inter Control: allows each button to interact with each other to form a group function.

103 Control: allows each button to enable or disable other input devices/instances.

Smart Light function: can automatically adjust the light-output according to its or external light sensor's value.



04. Relay & Others

Relay & Others	Input	Output	Load	OCF	OLP	SCP	Thermal	252	253	ErrRec.	Other
SimpleLink Quad-Relay	AC 110~240V	4 Relays	16A								
SimpleLink Dry Switch Converter	DALI Bus	3xDry Switch	45V								
Analog (0-10V) Converter	DALI Bus	0-10V	10 drivers	✓							
Hybrid-Relay & 0-10V Controller	AC 100~240V	=input	15A	✓	✓						

Note:

Customization and special converters are available upon request.



05. Gateway & Bus Power

Gateway & Bus Power	Input	Watt	DALI Chnl	Bus Power	Bus Delay	Ethernet	Smart Engine	DALI EMS	Artilect Tool	Simple Web	ModBus TCP
SmartLink AC 4-Channel Gateway with Bus Power	AC 100~240V	30W	4	✓		✓	✓		✓		✓
SmartLink AC 4-Channel Gateway (No Bus Power)	AC 100~240V	5W	4			✓	✓		✓		✓
SimpleLink AC 1-Channel Gateway with Bus Power	AC 100~240V	5W	1	✓		✓	✓		✓		✓
SmartLink DALI USB Gateway	AC 100~240V	5W	1	✓			✓	✓	✓		
DALI HA Bus Power	AC 100~240V	5W	1+1	✓							
DALI Bus Repeater and Amplifier	AC 100~240V	5W	1+1	✓	<30us						

Note:

ModBus TCP: only supports DALI dimming, scenes, RGB/CT control, input instance state, and its 16-bit value.

Artilect Tool: including configuration tools and iOS/Android dimming app. The configuration tools provide the means to access DALI devices, and edit advanced scripts, UI displays and so on.

DALI EMS: it is the dedicated energy management system (EMS) for DALI data. You can view each DALI devices' energy/time usage, and error logs.

Taxonomy



Smart Link System

